

A decorative border at the top of the page featuring various tropical plants. On the left, there are long, thin fern fronds and a large, dark green monstera leaf with characteristic holes. On the right, there are more fern fronds and a large, light green leaf with three bright pink, brush-like flowers.

Environmental Art

A decorative border at the bottom of the page featuring various tropical plants. On the left, there is a large, dark green monstera leaf with characteristic holes. In the center, there are several long, thin fern fronds. On the right, there are more fern fronds and a large, light green leaf with a single bright pink, star-shaped flower.

Environment





**What is in your
environment?**



Environmental Art

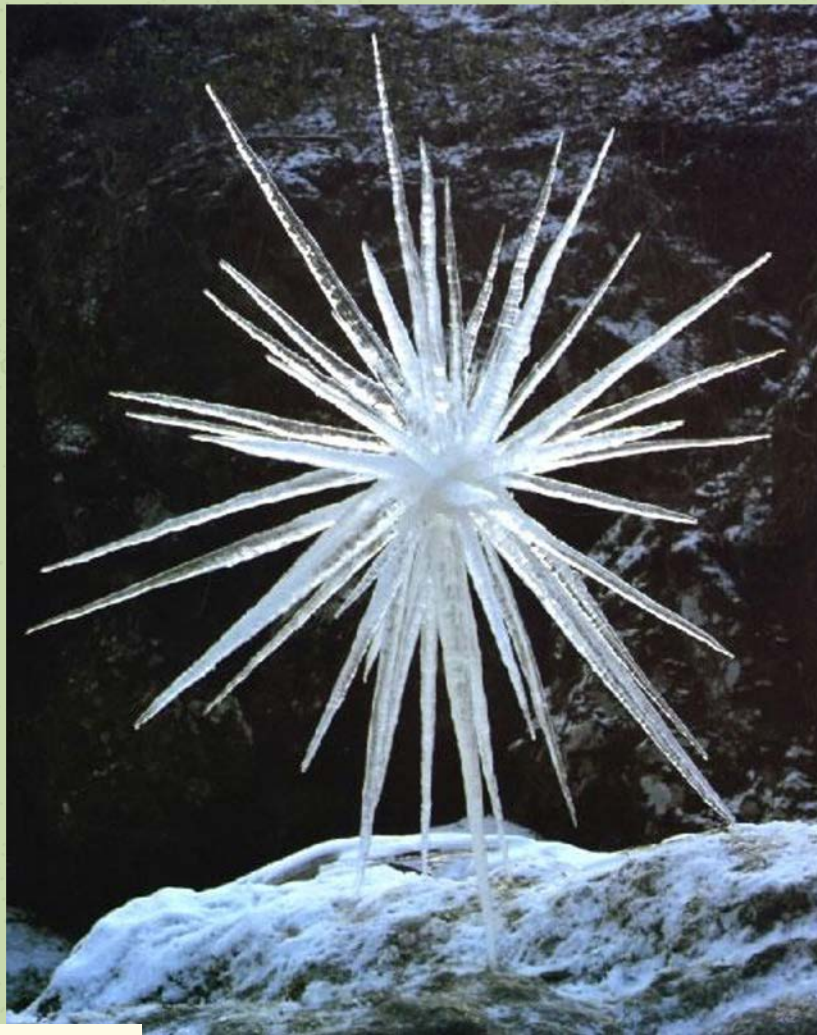


Agnes Denes, *The Living Pyramid*, 2015





The Labyrinth Trail, UCSP

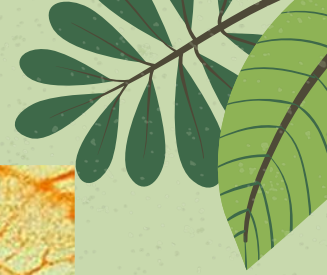


Andy Goldsworthy *Icicle Star* 1987



Andy Goldsworthy, *Untitled*

Leaf Rubbing



Now it's your turn!

1. Collect your leaves (1 or 2 ONLY)
2. Place the leaves under the paper and color on top

